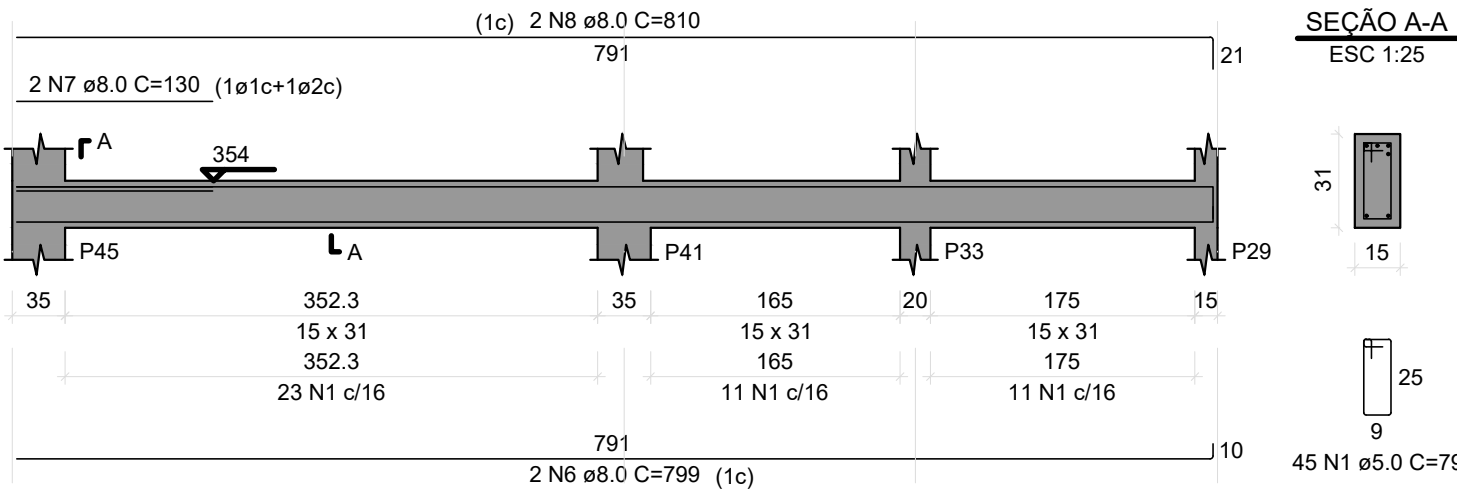


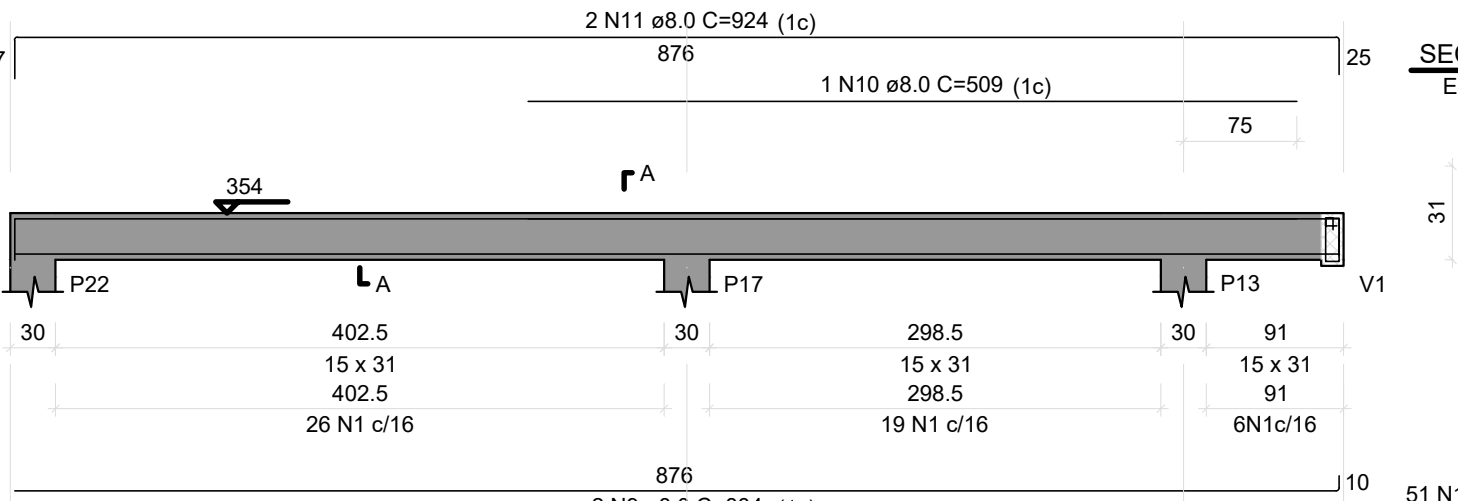
V53

ESC 1:50



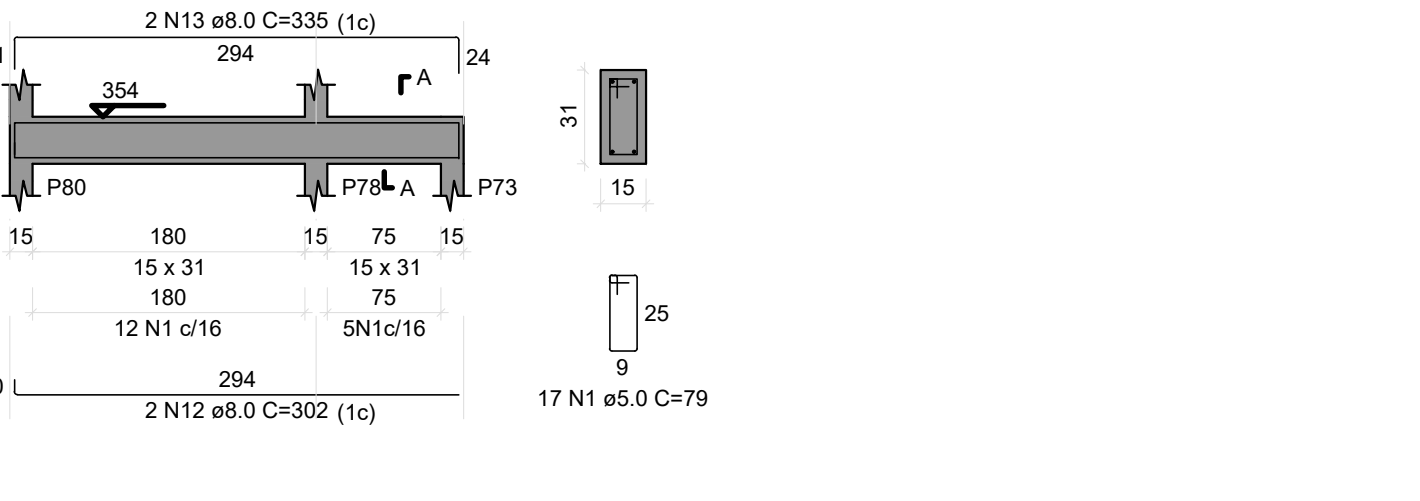
V54

ESC 1:50



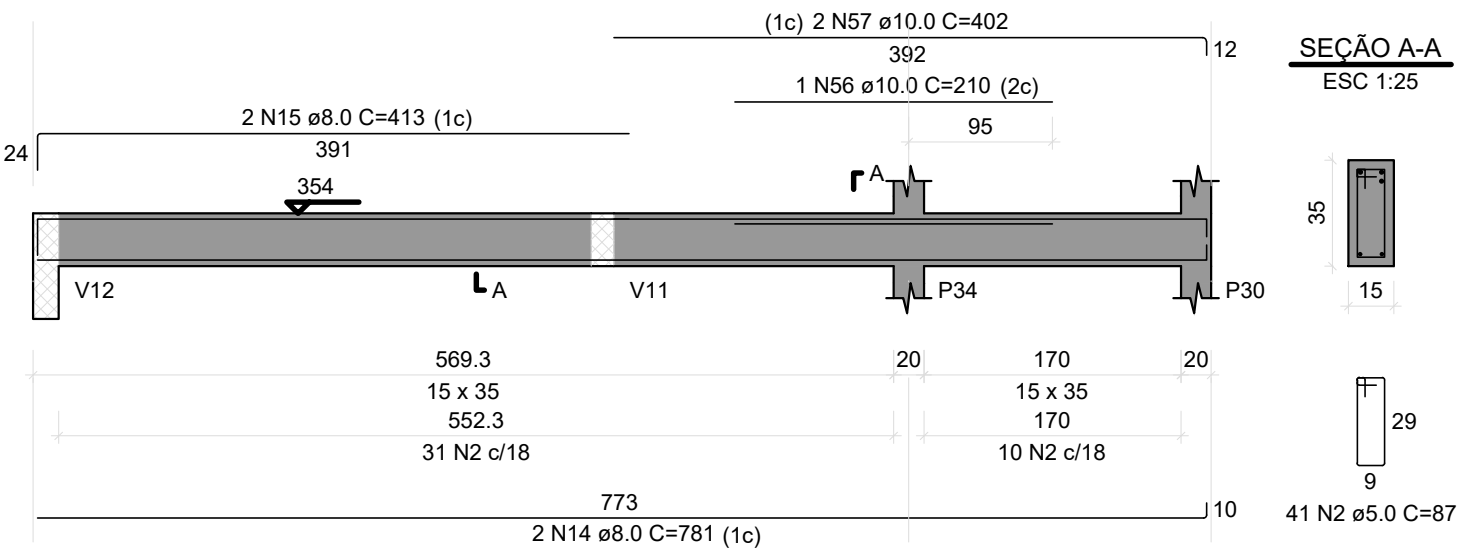
V55

ESC 1:50



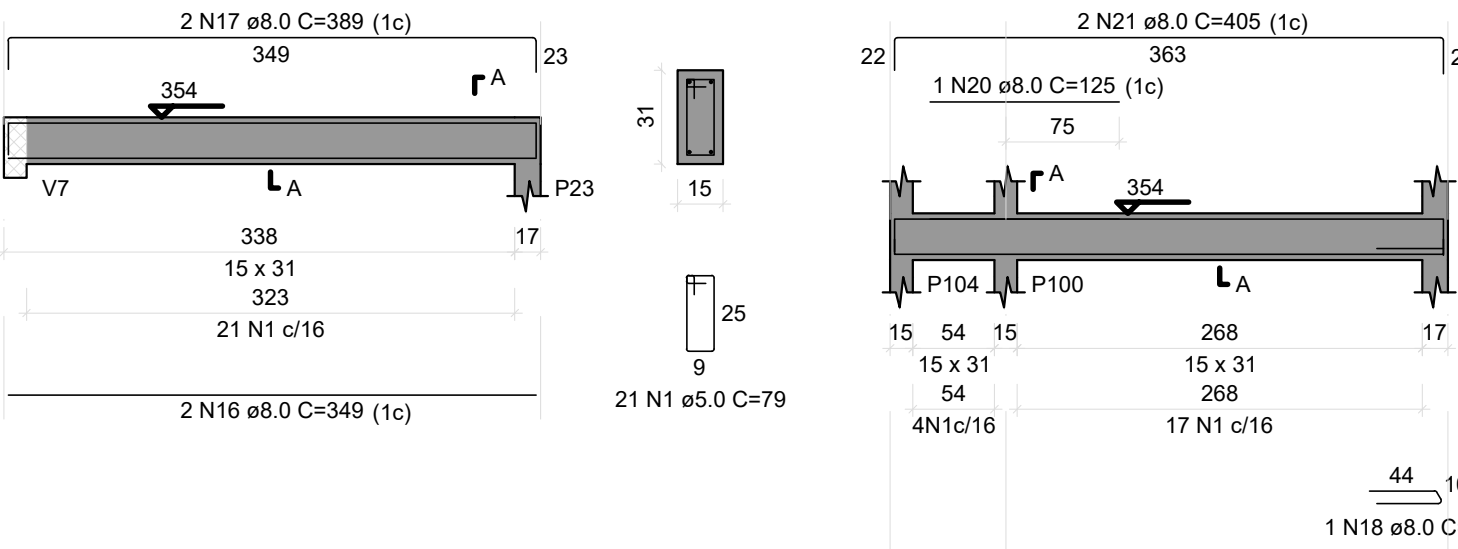
V56

ESC 1:50



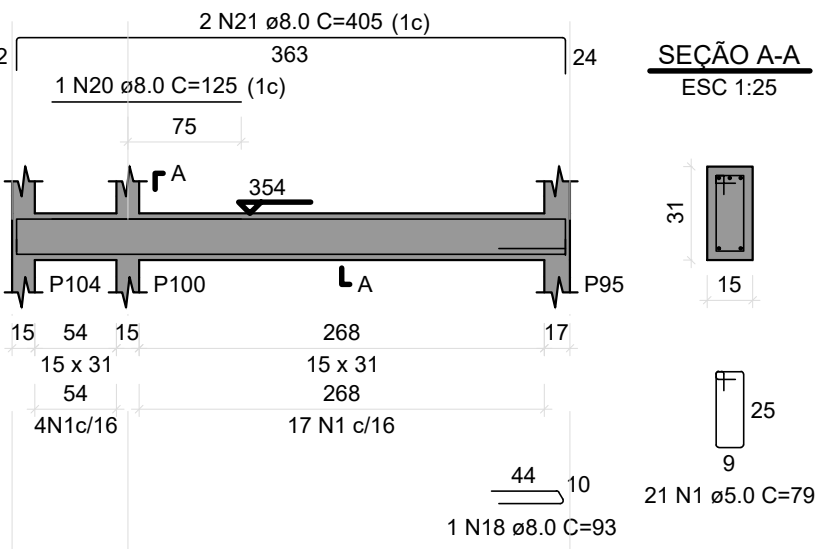
V57

ESC 1:50



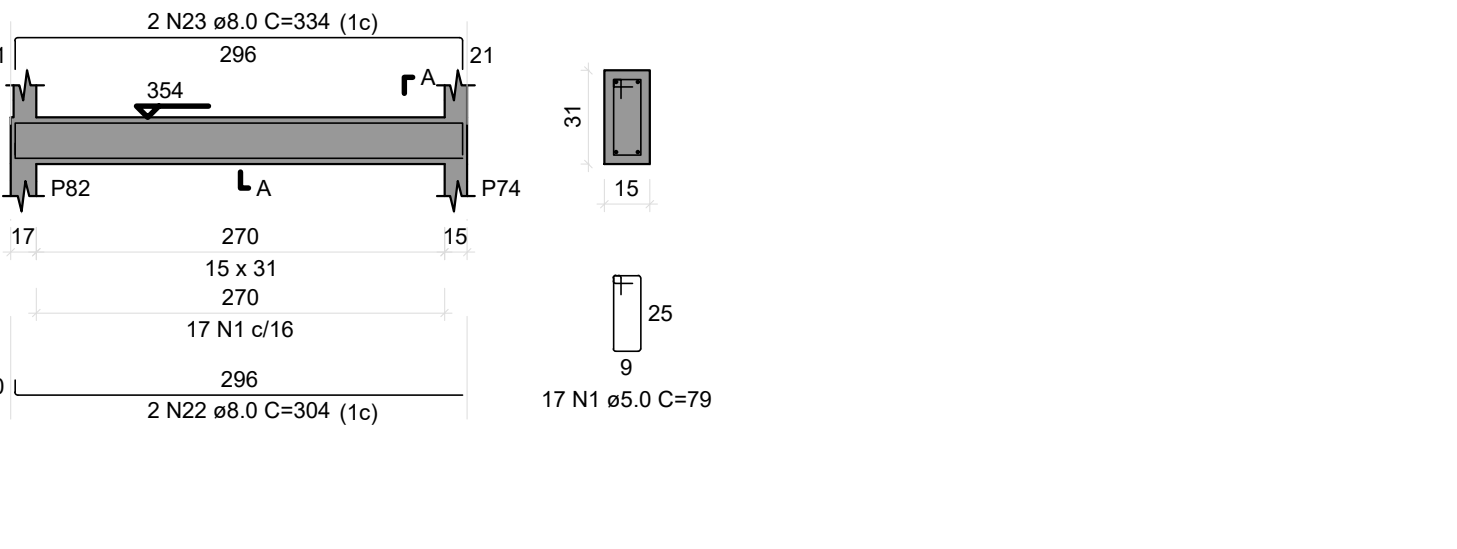
V58

ESC 1:50



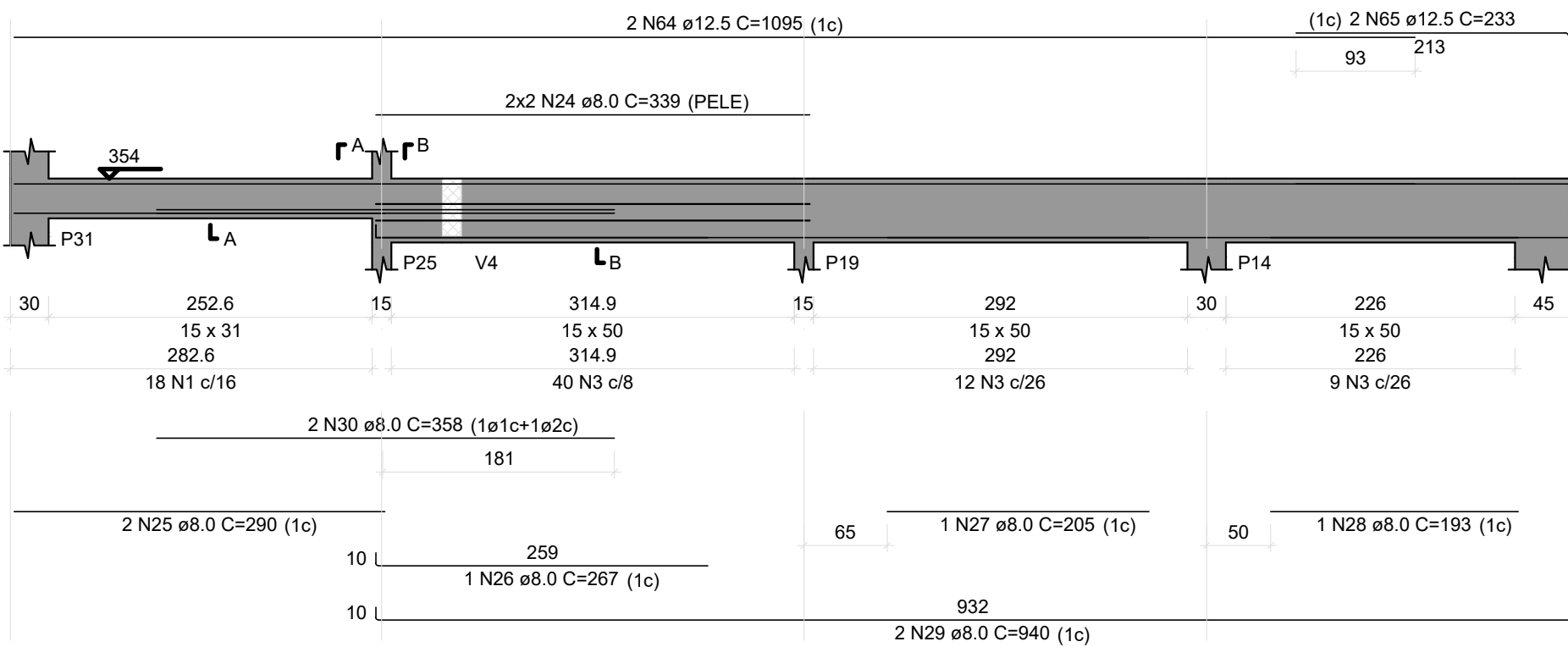
V59

ESC 1:50



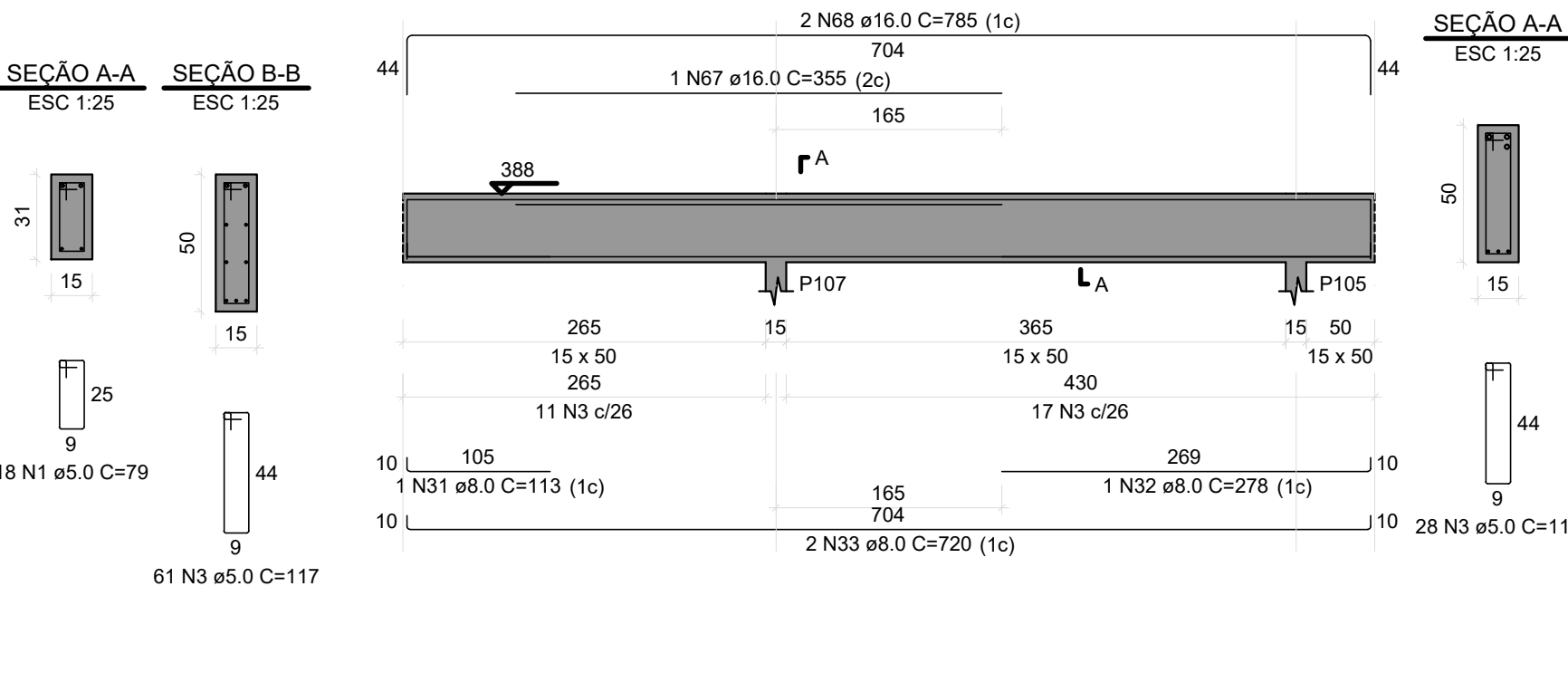
V60

ESC 1:50



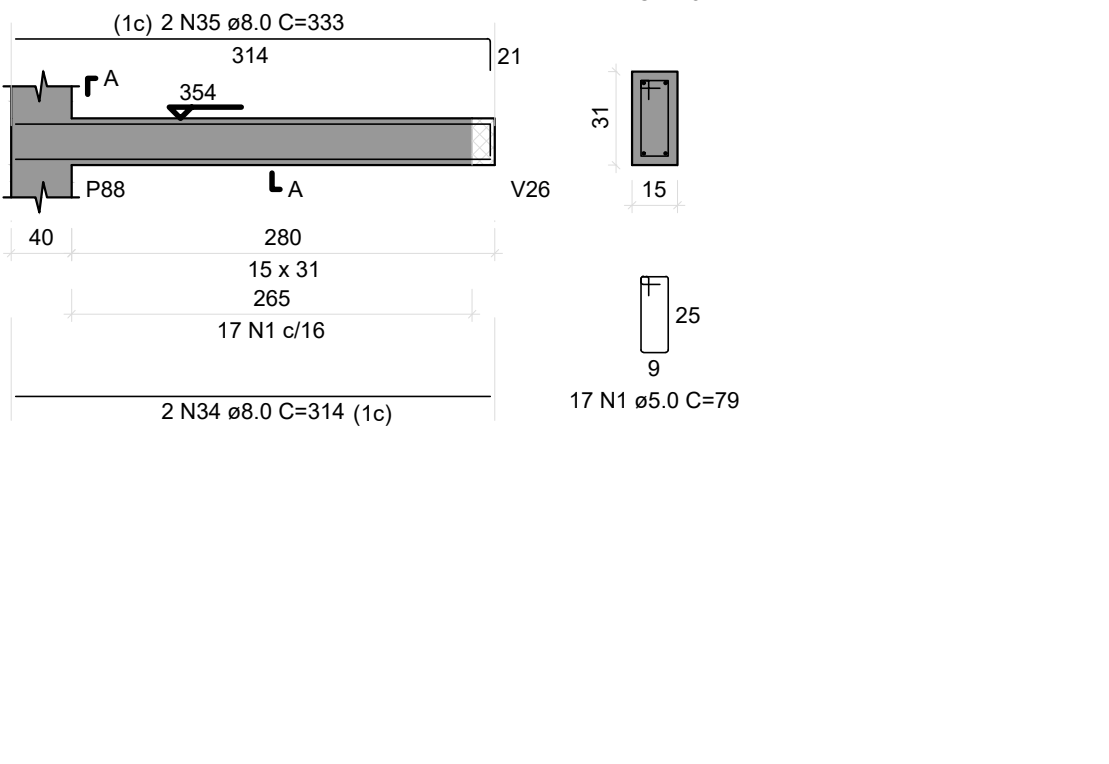
V61

ESC 1:50



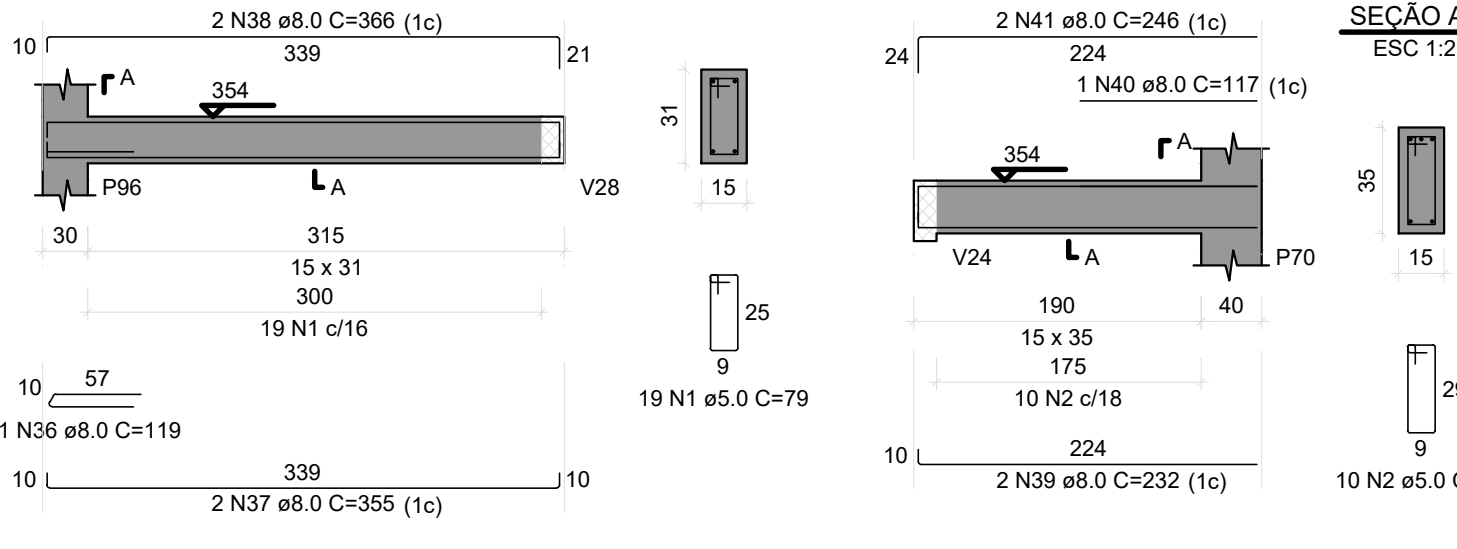
V62

ESC 1:50



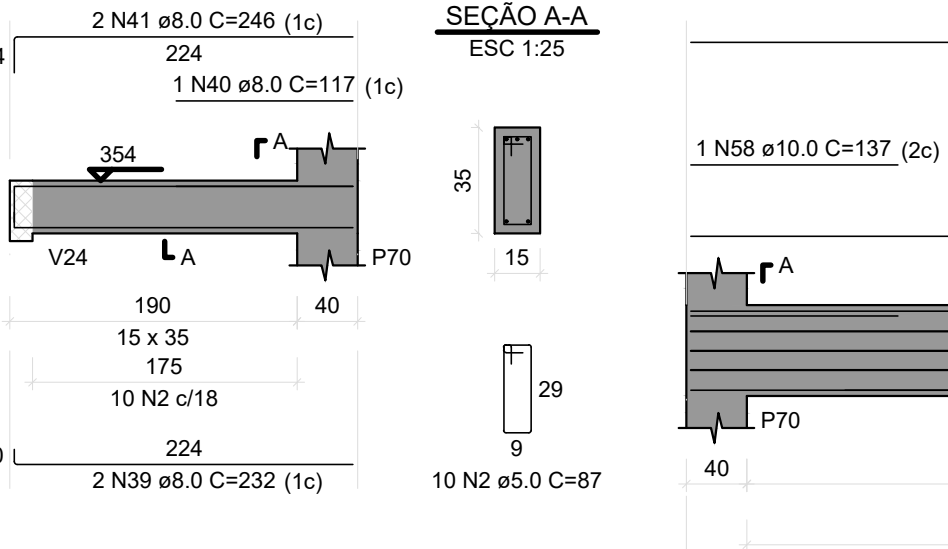
V63

ESC 1:50



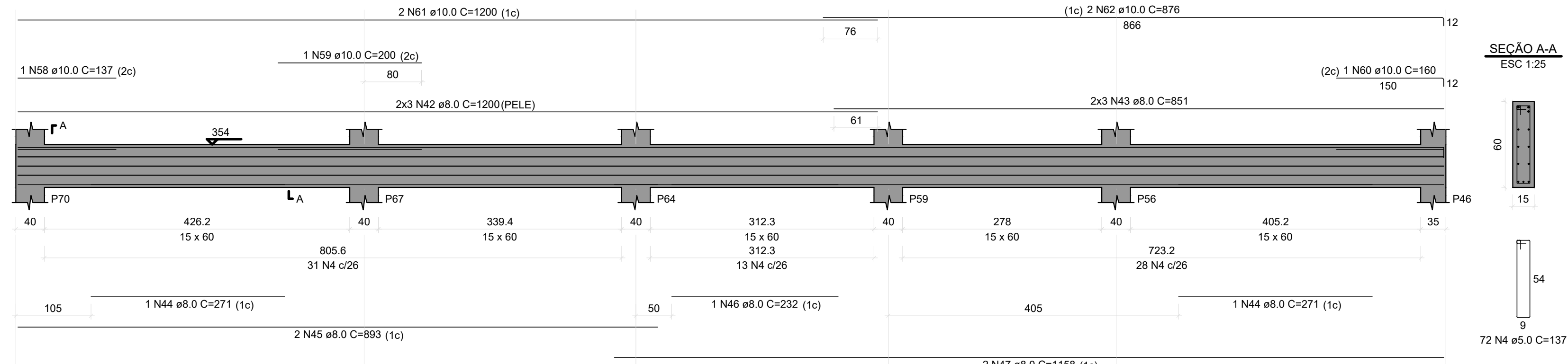
V64

ESC 1:50



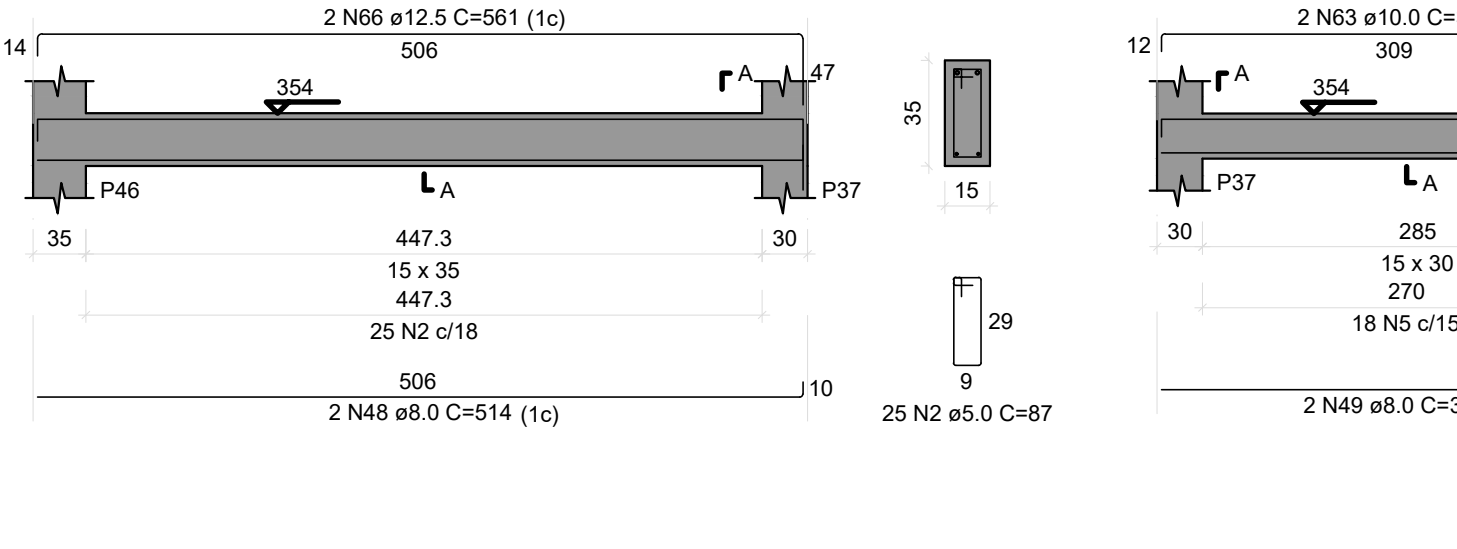
V65

ESC 1:50



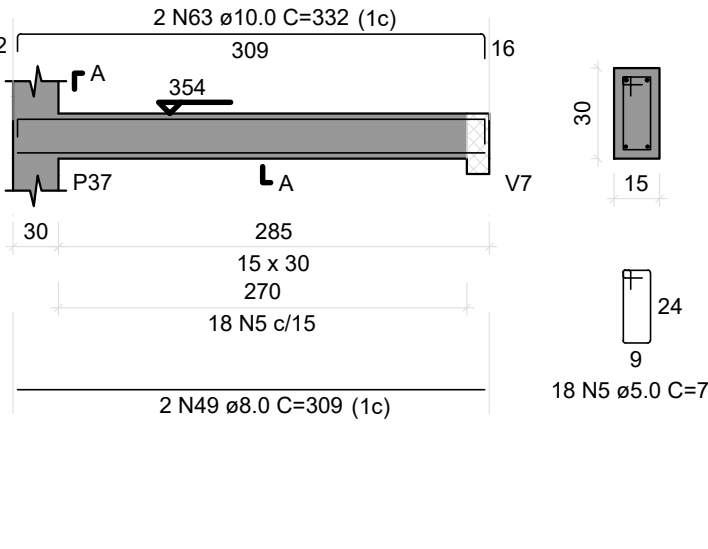
V66

ESC 1:50



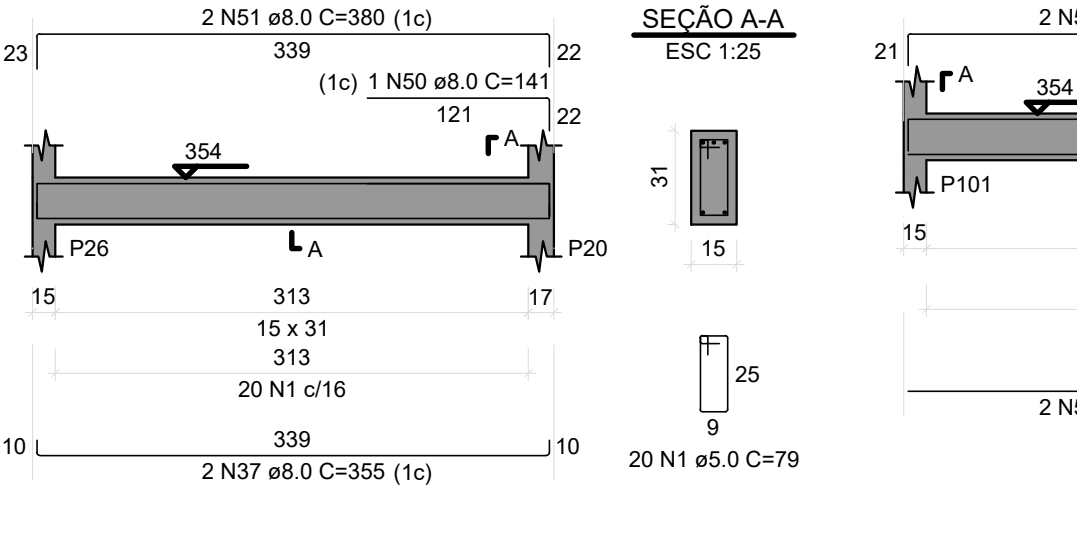
V67

ESC 1:50



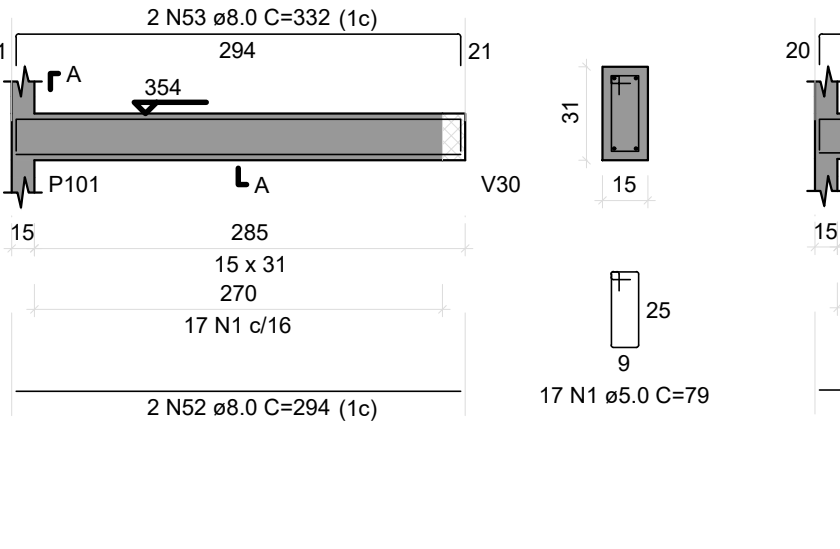
V68

ESC 1:50



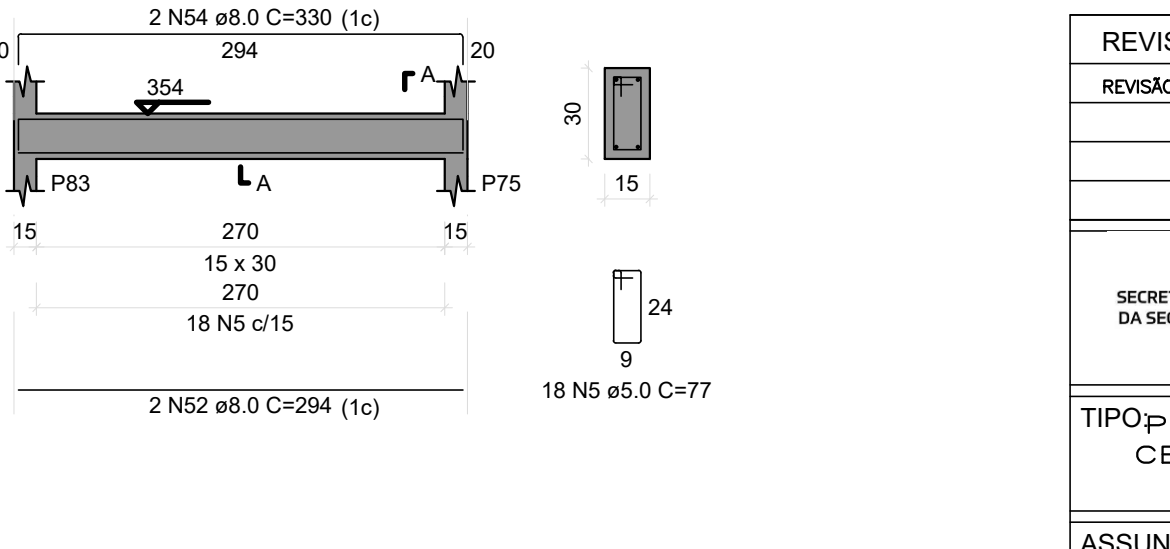
V69

ESC 1:50



V70

ESC 1:50



RELAÇÃO DO AÇO				
AÇO	N	DIAM (mm)	QUANT	C.TOTAL (cm)
V53	1	5.0	263	79
V54	2	5.0	76	87
V55	3	5.0	89	117
V56	4	5.0	72	137
V57	5	5.0	36	77
V58	6	8.0	2	799
V59	7	8.0	2	130
V60	8	8.0	2	810
V61	9	8.0	2	884
V62	10	8.0	2	609
V63	11	8.0	2	924
V64	12	8.0	2	302
V65	13	8.0	2	335
V66	14	8.0	2	781
V67	15	8.0	2	413
V68	16	8.0	2	348
V69	17	8.0	2	389
V70	18	8.0	1	93
V71	19	8.0	2	379
V72	20	8.0	2	125
V73	21	8.0	2	405
V74	22	8.0	2	304
V75	23	8.0	2	334
V76	24	8.0	4	339
V77	25	8.0	2	290
V78	26	8.0	1	267
V79	27	8.0	2	205
V80	28	8.0	1	193
V81	29	8.0	2	940
V82	30	8.0	2	356
V83	31	8.0	1	113
V84	32	8.0	1	278
V85	33	8.0	2	720
V86	34	8.0	2	314
V87	35	8.0	2	333
V88	36	8.0	1	119
V89	37	8.0	1	117
V90	38	8.0	2	366
V91	39	8.0	2	232
V92	40	8.0	1	117
V93	41	8.0	2	246
V94	42	8.0	6	1200
V95	43	8.0	6	551
V96	44	8.0	6	271
V97	45	8.0	2	893
V98	46	8.0	1	232
V99	47	8.0	2	1156
V100	48	8.0	2	514
V101	49	8.0	2	309
V102	50	8.0	1	141
V103	51	8.0	3	380
V104	52	8.0	4	294
V105	53	8.0	2	332
V106	54	8.0	2	330
V107	55	10.0	1	89
V108	56	10.0	1	210
V109	57	10.0	2	402
V110	58	10.0	1	137
V111	59	10.0	1	200
V112	60	10.0	1	160
V113	61	10.0	2	1200
V114	62	10.0	2	876
V115	63	10.0	2	332
V116	64	12.5	2	1006
V117	65	12.5	2	233
V118	66	12.5	2	561
V119	67	16.0	1	355
V120	68	16.0	2	785

RESUMO DO AÇO			
AÇO	DIAM (mm)	C.TOTAL (m)	PESO + 10% (kg)
CA50	8.0	497	215.7
CA50	10.0	64.2	43.5
CA50	12.5	37.8	40
CA50	16.0	13.3	33.4
CA50	5.0	504.4	85.5
PESO TOTAL (kg)			
CA50	332.7		
CA60	85.5		
Volume de concreto (C-25) = 5.60 m³			
Área de forma = 69.14 m²			

BLOCO ÁREA COMUM PRANCHAS: 212 a 295

REVISÃO	DESCRIÇÃO	REVISADO POR	DATA
REVISÃO 00	EMISSIONAL INICIAL	WAGNER	MARÇO/202
<div><div><div></div><div><b>SERGIPE</b> GOVERNO DO ESTADO</div></div><div><div>DIRETORIA DE ARQUITETURA E EDIFICAÇÃO</div><div>PRAÇA TOBIAS BARRETO, nº 20, BARRIO SÃO JOSÉ</div><div>CEP: 49050-220 ARACAJU/SE</div><div>TELS: (79)3216-5454 / (79)98851-9337</div></div></div>			
TIPO PROJETO ESTRUCTURAL EXECUTIVO DA CONSTRUÇÃO DO CENTRO INTEGRADO DE SEGURANÇA PÚBLICA (CISP) EM NOSSA SENHORA DA GLÓRIA/SE			Nº DA PRANC
ASSUNTO: BLOCO ÁREA COMUM VIGAS DO TERREO 05			254/34
END.: RUA ANTONIO JOAQUIM DE FARIAS, S/N - N. SRA DA GLÓRIA - S			
AUTOR DO PROJETO: WAGNER DARY DA SILVA			
RESPONSÁVEL TÉCNICO: WAGNER DARY DA SULVA RN: 270771497			
ESCALA: INDICADO	DATA: MARÇO/2024	DESENHISTA: WAGNER DARY DA SILVA	